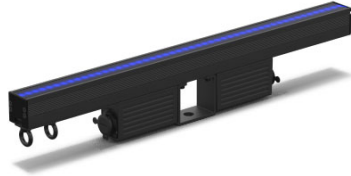


# ÉPIX Strip IP 50



## SPECIFICATIONS

### Optical

- Light Source: 50 LEDs (tri-color RGB) SMD 5050, 50,000 hours life expectancy
- Viewing Angle (with installed Square Milky Filter): 160°
- Viewing Angle (with optional Round Milky Filter): 160°
- Viewing Angle (with optional Black Stealth Filter): 125°
- Illuminance – open: 8,640 NITS
- Illuminance - Square Milky Filter (installed): 2,470 NITS
- Illuminance - Black Stealth Filter (included): 1,455 NITS
- Illuminance – Round Milky Filter (included): 1,360 NITS
- Pixels: 50 x 1
- Pixel Pitch: 10 mm
- Refresh Rate: 4,800 Hz (S-PWM)

### Optional Accessories

- ArKaos Media Master Express + KN software
- Clamps
- Neutrik powerCON cables
- Neutrik etherCON cables

## FEATURES

- Pixel-mapping IP65 outdoor half-meter 50 x 1 LED strip for showing video and/or motion graphics
- Includes square milky filter (installed) for diffused output, round milky filter (included) for diffused output, and black stealth filter (included) for high contrast
- Uses specialized LED dimming control via S-PWM (scrambled PWM), which enhances on-camera performance.
- Versatile control options include Art-Net, Kling-Net, and sACN (streaming ACN) to support the touring, rental, and installation markets
- Reduce programming time and increase application by using the alternate personalities of 7 channel, multi-section control (15-30 channels), or use the Pixel personality (150 channels) for use with video servers
- Increase viewing angle by using the dome or square accessory
- ÉPIX Drive 2000 IP required for operation

## Construction / Physical

- Dimensions (with installed Square Milky Filter ): 19.68 x 1.33 x 3.93 in (500 x 34 X 100 mm)
- Dimensions: (with included Black Stealth Filter) 19.68 x 1.33 x 3.46 in (500 x 34 x 88 mm)
- Dimensions (with included Round Milky Filter): 19.68 x 1.77 x 5.03 in (500 x 45 X 128 mm)
- Weight: 3.4 lb (1.5 kg)
- Exterior Color: Black
- Housing Material: Aluminum

## Connections

- Data Connectors: IP-65 4-pin XLR
- Physical Linking: 20 inline ÉPIX Strip IP per port of Drive 2000 IP
- Minimum required device linking cable size: 4 conductor (2 x 14 AWG, 2 x 16 AWG)
- Total max. cable length (shielded cables) between <a

- [ÉPIX Drive 2000 IP](/products/epix-drive-2000-ip/) and last ÉPIX IP fixture: 210 ft (64 m)
- Max. cable length (shielded cables) between [ÉPIX Drive 2000 IP](/products/epix-drive-2000-ip/) and first ÉPIX IP fixture: 65 ft (20 m)
- Max. cable length (shielded cables) between ÉPIX IP fixtures: 60 ft (18 m)
- Total max. cable length (unshielded cables) between [ÉPIX Drive 2000 IP](/products/epix-drive-2000-ip/) and last ÉPIX IP fixture: 300 ft (91 m)
- Max. cable length (unshielded cables) between [ÉPIX Drive 2000 IP](/products/epix-drive-2000-ip/) and first ÉPIX IP fixture: 150 ft (45 m)
- Max. cable length (unshielded cables) between ÉPIX IP fixtures: 100 ft (30 m)

## Control

- Control Protocol: Art-Net, Kling-Net, sACN
- Control Channels Art-net, sACN: 7, 15, 30, 75, or 150

## Electrical

- Power and Current: 16 W, 0.133 A @ 120 V, 60 Hz
- Power and Current: 17 W, 0.082 A @ 208 V, 60 Hz
- Power and Current: 17 W, 0.073 A @ 230 V, 50 Hz

## Certifications / Qualifications

- CE, MET
- IP Rating: IP65, outdoor/wet
- Temperature (Ambient): -4 °F to 113 °F (-20 °C to 45 °C)

## What's Included

- ÉPIX Strip IP 50
- Square milky filter (installed)
- Round milky filter (included in box)
- Black stealth filter (included in box)