

LED STROBE FX

- + 3-in-1 strobe, blinder, and wash light
- + 132x 0.2W high output SMD 5050 RGB LEDs
- + RGB color mixing in DMX and stand-alone mode
- + Flicker-free, constant current LED driver
- + Multiple built-in color macros and strobe effects
- + Auto and sound active programs via DMX
- + Variable electronic strobe (1-30Hz)

OPTICAL

132x 0.2W SMD 5050 RGB LEDs
 80° beam angle
 Flicker-free LEDs
 Luminous intensity: 220 lux @ 1M, 64 lux @ 2M

WEIGHT & DIMENSIONS

13.7 x 3 x 4.6 in. (348 x 75 x 115.5 mm)
 2.7 pounds (1.2 kg)

CONTROL

Protocol: USITT DMX-512
 1/2/3/4/6-channels (8 total)
 LED control panel
 DMX512, M/S, auto, sound
 3-pin DMX in/out

POWER & CURRENT

100-240VAC, 50-60 Hz
 Power consumption: 25W
 Fuse: 2A, 250V
 IEC power input



SPOTMAN

MOVING HEAD

- + 30W high output white LED light source
- + 7 gobos (+ open) & 7 color (+ white) color wheel
- + Pan: 540°/ tilt: 270° (8-16 bit resolution)
- + Half color beams and rainbow flow effects
- + 13° beam angle + manual focus
- + Flicker-free, constant current LED driver
- + Variable electronic dimmer (0%-100%)



OPTICAL

Light source: 30W high output white LED
 13° beam angle
 Luminous intensity: 3,000 lux
 @ 2m, 1,450 lux @ 3m

WEIGHT & DIMENSIONS

7.1 x 5.8 x 11.1 in. (180 x 147 x 281 mm)
 6.5 pounds (2.95 kg)

CONTROL

Protocol: USITT DMX-512
 9/11-channel DMX modes
 3-pin DMX in/out
 4-button LED display menu
 DMX, M/S, Auto, Sound Active

POWER & CURRENT

100-240VAC, 50-60 Hz
 Power consumption: 45W
 Fuse: 3A, 250V
 IEC power input



4-IN-1 LASER FX

- + R/G/B/W beams via rotating crystal half-sphere
- + Wash, strobe, and chase RGB LED eye-candy effects
- + Projects thousands of red and green laser dots
- + Laser safety key lock switch
- + 2-button manual control (no DMX)
- + Easy-to-use IR remote control
- + Built-in microphone with sensitivity adjustments

OPTICAL

4* 3W LEDs (R1/G1/B1/W1)
 32* 3-in-1 RGB SMD5050 LEDs
 Lasers: 100mW red, 650nm, 30mW green, 520nm

WEIGHT & DIMENSIONS

9.8 x 6.3 x 7.9 in. (248 x 160 x 200 mm)
 3.6 pounds (1.6 kg)

CONTROL

2-button manual control
 IR remote control
 Operating modes: auto, sound active

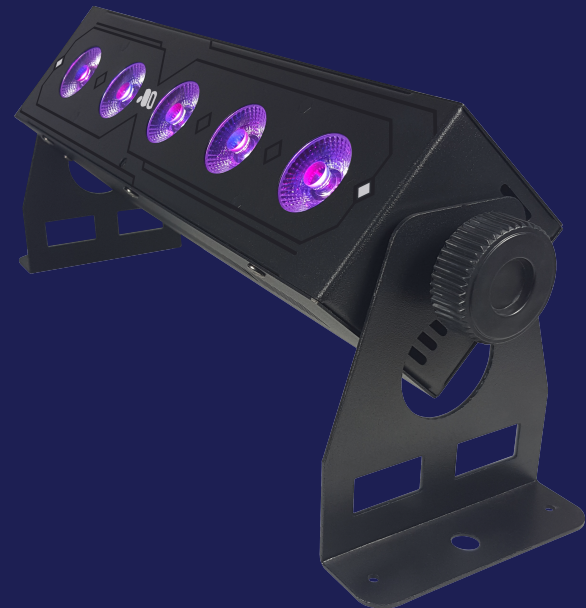
POWER & CURRENT

100-240VAC, 50-60 Hz
 Power consumption: 25W
 Fuse: 2A, 250V
 IEC power input



RGB LED WASH

- + 5x 10W RGBW 4-in-1 LEDs
- + RGBW color mixing
- + 25° beam angle
- + Color fade, jump, and strobe
- + DMX, auto, & sound active modes
- + Easy-to-use IR remote control
- + Flicker-free LED driver



OPTICAL

5* 10W 4-in-1 RGBW LEDs
 25° beam angle
 Flicker-free LEDs
 Luminous intensity: 1,085 lux @ 2.5M, 248 lux @ 5M

WEIGHT & DIMENSIONS

14.4 x 4 x 5.5 in. (364 x 100 x 138 mm)
 4.1 pounds (1.85 kg)

CONTROL

Protocol: USITT DMX-512
 4/8-channel DMX
 LED control panel
 DMX512, M/S, auto, sound
 3-pin DMX in/out

POWER & CURRENT

100-240VAC, 50-60 Hz
 Power consumption: 36W, 0.49A, PF: .64
 Fuse: 3A, 250V
 IEC power in/out