

SL NITRO 510C

Date: _____

Type: _____

Firm Name: _____

Project: _____

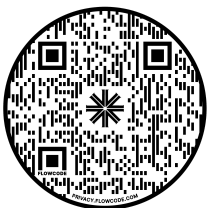
The SL NITRO 510C is a cutting-edge RGB and White LED strobe luminaire that delivers intense bursts of colored and white light and dynamic effects. The tightly packed array of 264 high-power fixed white LEDs and 264 RGB LEDs ensures maximum output for both traditional white effects and an almost infinite choice of color with full field and even distribution across 120°. The rugged construction, Showline standard LCD menu system, continuous-on operation and lower power consumption guarantee the SL NITRO 510C is the perfect strobe luminaire for any application. A unique quick-connect systems allows SL NITRO 510C units to connect together easily top-to-bottom and side-by-side. In addition, the form factor of the SL NITRO 510C matches the SL NITRO 510 and the SL BAR 520, so the three luminaries can be interconnected providing unlimited design possibilities. Six unique zones of control allow ultimate flexibility, while unique built in chases aid in creativity and simplicity. With over 60,000 lumens of output, the SL NITRO 510C rivals conventional fixed white strobes and provides designers with an exciting new dimension to dynamic looks whether washing a stage or pointing directly at an audience.



- Separate white emitters deliver a true white strobe effect without compromising performance.
- Unlimited continuous on and continuous strobe operation.
- Quick-connect system enables luminaires to be joined together side to side and top to bottom. Compatible with SL NITRO series and SL BAR 520.
- 264 high power white SMD LEDs. 264 high power RGB color SMD LEDs.

- Exciting multi-zone macro chases enable the quick creation of dynamic color and strobe effects.
- Variable strobe: 0-650 ms. Strobe rate: 0-30 flashes/second.
- Pre-programmed special effects.
- 8-bit and 16-bit RGB and W control; 6 channel mode.

For detailed product information, please refer to the Product Guide at <https://www.vari-lite.com/global/products/sl-nitro-510c>



VARI*LITE

Specifications

Due to continuous improvements and innovations, specifications may change without notice.

Source

LED	264 x Tri chip RGB + 264 x White
Source Max Power Consumption	582 x 1 W
Dimming	Electronic 8-bit / 16-bit
Dimmer Curves	Square Law (Default), Linear, S -Curve
Strobe Speed	0 - 30Hz
Strobe Modes	Continuous, Random, Random Sync

Optical Performance

Beam Angle	120°
Output Lumens	60000
Default Color Output Color Temperature	7000 K (White LED Only)
CRI RA	> 90

Color System

Additive Color Mixing	RGB + W
Color Mixing Control	RGBW 8-bit, RGBW 16-bit, HSIC
Color Calibration	Selectable On/Off
Preset CTT Levels (10)	2700 to 10,000k
Color Presets	32 Calibrated Colors
Color Wheel Effects	Color Preset Chase

Electrical

Max output Power Consumption	360 W
Power Connection	Powercon Input - Thru Power cable not included - input connector only
Input Voltage	100–240 VAC, 50 / 60 Hz

Data

Supported Protocols	DMX-512A (RDM)
DMX Modes	
16-Bit Full	24 / 41 / 58 / 109 Channels
16-Bit Expanded	20 / 33 / 46 / 85 Channels
16-Bit	18 / 29 / 40 / 73 Channels
8-Bit	12 / 19 / 26 / 47 Channels
Simple 6	6 Channels
Data Connections	5 - Pin XLR Input and Thru
Zone Control	1 / 2 / 3 / 6 Zones
Manual Mode	On Board local Control

Noise Level / Fan Control

Fan Mode	Continuous (On) / Auto Ramping
Cooling System Type	Forced Air

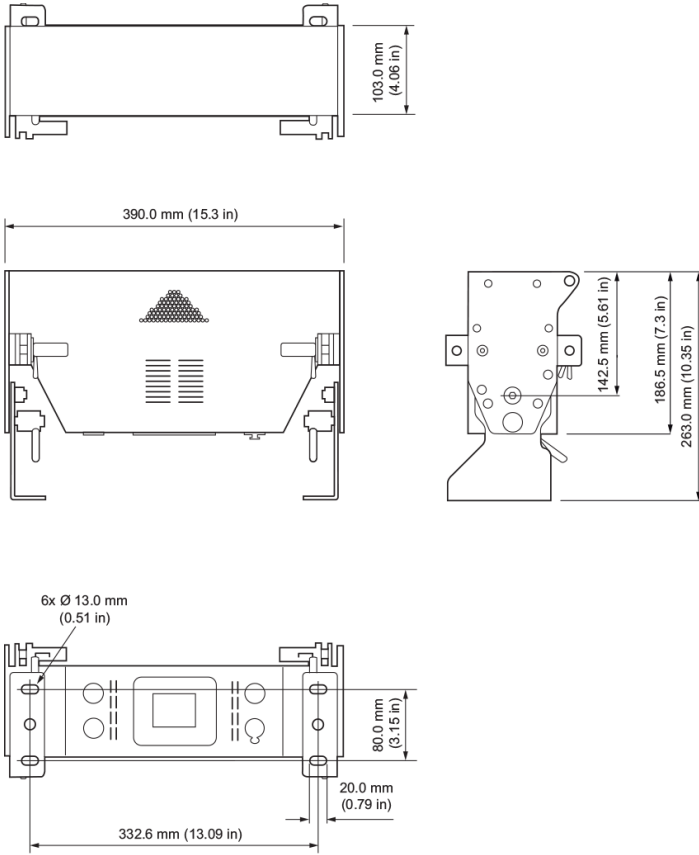
Mounting

Yoke / Feet Type	2 x 180° Swivel M12 (1/2") Fixing point
Fixture mounting/Hanging orientation	Hanging - Floor - Side
Secondary Safety Wire Point	2 x Safety Point located next to yoke Safety Wire not included

Photometrics and IES Files

For IES files and photometric reports, please refer to the product page:
<https://www.vari-lite.com/global/products/sl-nitro-510c>

Dimensions



Physical

Construction	Superstructure made of Aluminum, and steel metal plates, Covers Aluminum
IP Rating	IP20
Standard Finish	Black
Dimensions	263 x 390 x 103 mm (10.0 x 15.0 x 4.0 in)
Fixture Weight	8.0 kg (18.0 lb)
Operating Temperature	-10-45°C (14-113°F)

Certification and Safety

Approbations	CE, C-Tick/cETL
--------------	-----------------

Luminaire and Accessories

Product type
SL NITRO 510C, RGBW

Order Code
SLNITRO510C

VARI*LITE

© 2023 Signify Holding. All rights reserved. All trademarks are owned by Signify Holding or their respective owners. The information provided herein is subject to change, without notice. Signify does not give any representation or warranty as to the accuracy or completeness of the information included herein and shall not be liable for any action in reliance thereon. The information presented in this document is not intended as any commercial offer and does not form part of any quotation or contract, unless otherwise agreed by Signify. Data subject to change.

05/08/2023

Vari-Lite
<https://www.vari-lite.com/global/products/sl-nitro-510c>