

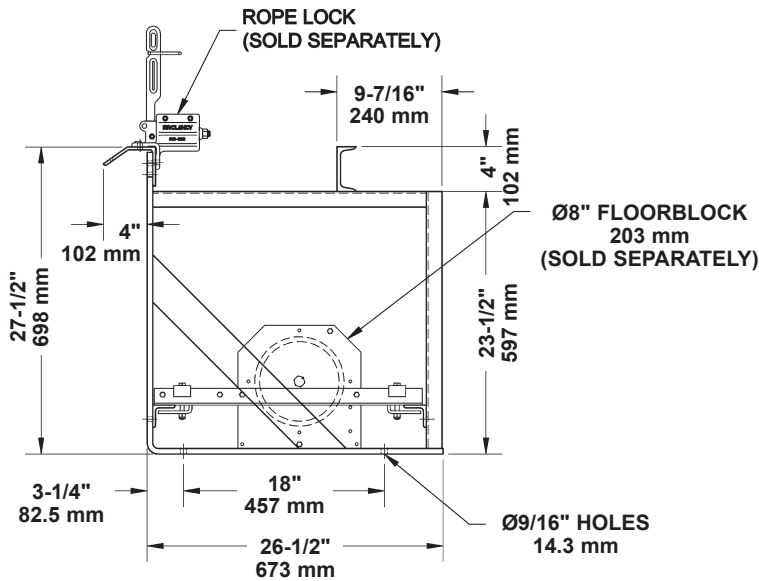
# Locking Rails - Wire Guide

- Locking rails support rope locks and the index cards used to identify sets.
- Two angles are provided to support 855M floor blocks.
- Rope locks and index cards are mounted on a 3" x 5" x 1/4" (76 mm x 127 mm x 6 mm) formed, pre-punched steel angle.
- Built to withstand a 500 lb. per linear foot (744.5 kg/m) up load (RWL).
- Numbered index cards with a safety warning are included.  
These can be written on using erasable marker or grease pencil.
- A 4" (102 mm) channel is provided as a lower bumper for counterweight arbors.
- Mounts to the stage floor. Mounting method must be able to withstand the imposed load.
- Mounting stanchions are located on 5' (1.52 m) (maximum) centers and made from 1/2" x 3" (13 mm x 76 mm) flat bar and 3" (76 mm) channel.



Wire Guide Locking Rail  
011-518R6

## Dimensions



## Order Information

Number	Type	Set Centers	Weight
11-518R6	Single Purchase	6" (152 mm)	31 lbs./ft. (14 kg/m)
11-518R8	Single Purchase	8" (203 mm)	31 lbs./ft. (14 kg/m)
11-518D6	Double Purchase	6" (152 mm)	31 lbs./ft. (14 kg/m)
11-518D8	Double Purchase	8" (203 mm)	31 lbs./ft. (14 kg/m)

**RWL:** RWL is maximum load that can be applied to the locking rail which is in "like new" condition and has been properly installed, maintained, and operated.



© 2017 Wenger Corporation  
USA/2017-12/W

