



Features

- U. L. Listed
- Choice of connector type
- Low voltage barrier option
- Code gauge steel back box
- Hinged door with cable notches
- Standard cast aluminum non-skid tread plate

Description

Electronics Diversified, Inc. FP series floor pocket is designed to be permanently mounted in the stage floor, flush with the stage surface. This pocket provides safe cable connections in the stage floor, minimizing cable crossings.

Floor pockets can feed portable footlights, booms, ground rows, practical lights within the set, and on-stage spotlights on floor stands.

Floor Pockets

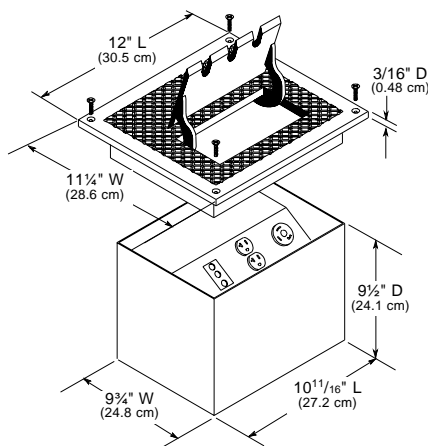


Specifications

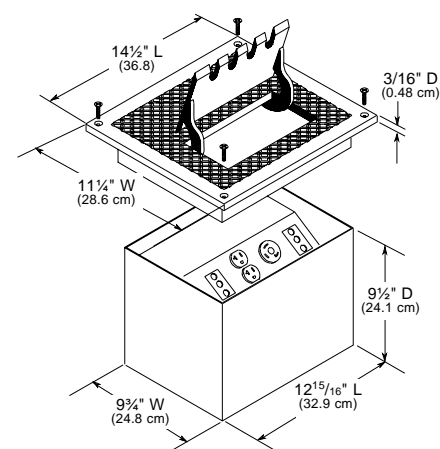
1. This unit shall be a flush floor pocket permanently installed in the stage floor as shown on drawings.
2. Each floor pocket shall be provided with a 3/16" (4.76mm) thick cast aluminum floor plate and hinged cover with cable notches.
3. Female receptacles shall be numbered as specified, mounted on an angled plate.
4. Floor pocket shall be listed by Underwriters Laboratories, Inc.
5. Floor pocket shall be Electronics Diversified, Inc., FP series.

Dimensions

3-gang, standard aluminum floor pocket.



4-gang, standard aluminum floor pocket.



Ordering Information:

Receptacle:

- ☐ FP 3-gang
☐ FP 4-gang

Tread plate:

- ☐ Cast aluminum
☐ Cast Iron (4 gang only)

Connector Type:

- ☐ PBG (20 Amp)
☐ GTL (20 Amp)
☐ GSP (20Amp)
☐ SP

Options:

- ☐ Blank with LV Barrier
☐ Control Receptacle

JOB NUMBER:

APPROVAL STAMP

JOB NAME:

CUSTOMER:

P. O. #

Electronics Diversified, Inc.

PRODUCT DATA SHEET
D105

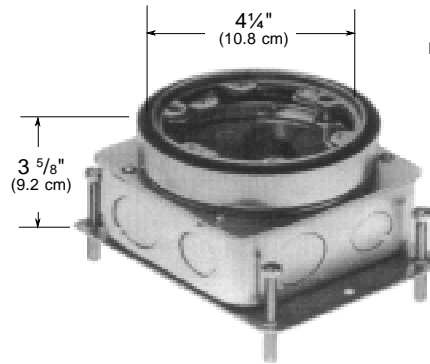
1675 N.W. Cornelius Pass Road ● Hillsboro, Oregon 97124 U.S.A.
Phone: (503) 645-5533 ● FAX: (503) 629-9877 ● Web Site: www.edionline.com

Features

- Attractive finish for elevated stage or platform
- Adjustable steel floor box
- Line or low voltage applications
- Duplex or single receptacle
- Decorative flush cover seals receptacle

Description

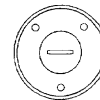
The floor box offers a simple method for sealed access to power and control connections in a stage or elevated platform. Built-in adjustments allow for easy installation.



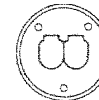
Before Pour Adjustment:
" (6.3 cm)

or Pour Final Adjustment:
(1.27 cm)

Round Covers: 4" dia. (10.16 cm)



Single



Duplex

Order Information:

- | | | |
|--|--|---|
| <input type="checkbox"/> Steel floor box | <input type="checkbox"/> Single PBG outlet | Round Covers: |
| <input type="checkbox"/> Line voltage | <input type="checkbox"/> Duplex PBG outlets | <input type="checkbox"/> Aluminum cover |
| <input type="checkbox"/> Low voltage | <input type="checkbox"/> XLR LV outlet | <input type="checkbox"/> Brass cover |
| | <input type="checkbox"/> D-15/25 pin connector | |

Pop-up Floor Box

Features

- Unique pop-up design locks into position
- Complements any decor
- Integrates both line and low-voltage in the same box on opposite sides
- U.L. listed as watertight in either up or down position

Description

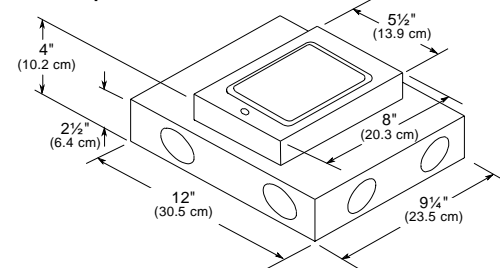
Ideal for applications where flexibility in power and control positions is a goal.

A standard Allen key locks the unit open or closed.

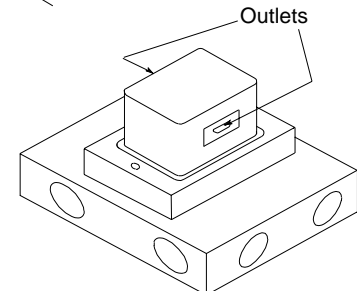
Typical applications include office buildings, churches, and auditoriums where flush recessing is recommended for safety and dependability.

The pop-up floor box allows easy access to concealed controls in any floor surface.

Flush position



Pop-Up position



Order Information:

- | | |
|--|--------------------------------------|
| <input type="checkbox"/> Pop-up floor box | Low Voltage Outlets: |
| <input type="checkbox"/> Duplex PBG outlet | <input type="checkbox"/> LV- XLR |
| <input type="checkbox"/> Custom | <input type="checkbox"/> LV-D-15 pin |
| | <input type="checkbox"/> LV-D-25 pin |

CONSTRUCTION: Exposed parts are 3/16" (0.48 cm) satin aluminum. Housing is .067 galvanized steel. All gasket material is closed-cell neoprene. Leveling screws allow for up to 3/8" (0.95 cm) adjustment for permanent leveling.

JOB NUMBER:

APPROVAL STAMP

JOB NAME:

CUSTOMER:

P. O. #