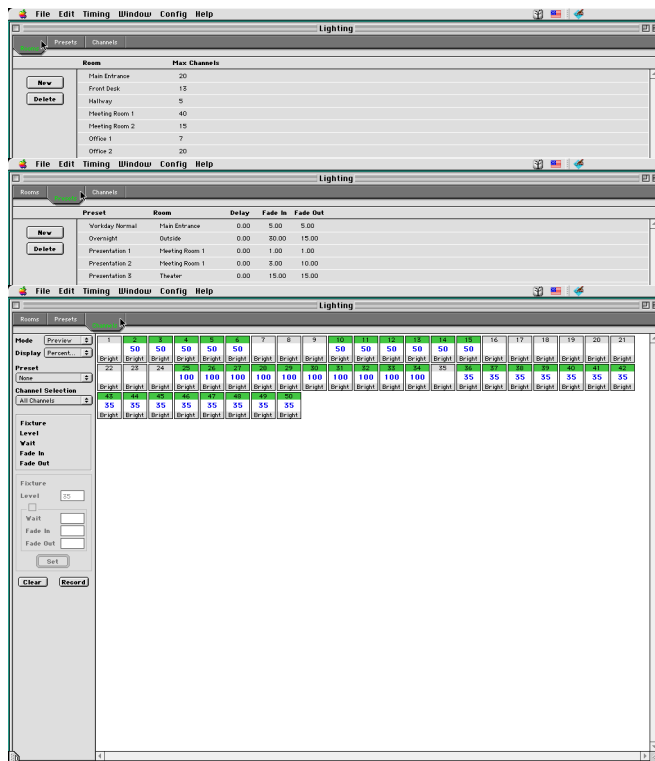




TSC/E System

Features

- Advanced distributed lighting control system that operates over 10Base T networks.
- Easy to use Graphical User Interface
- Advanced software allows centralized control, service and configuration via the Internet.
- Designed to work on a wide variety of software and hardware platforms
- Scalable System that will grow with your users needs and applications.
- Large selection of remote stations.
- Component based software can be easily customized to integrate other control systems
- Up to 20 universes of DMX merge, patching and routing for entertainment venues



Description

The TSC/E is a distributed network based lighting control system. It uses industry standard 802.3 Ethernet based protocols to control up to 20 universes of DMX 512 devices (10,240 channels). In addition, the TSC/E can interface with and control/other serial and analog based systems.

Utilizing the wide variety of remote TSC architectural stations available, this system can provide lighting control for practically any user level and venue. All major control functions of the system (# of presets, combines, rooms) are user config-

urable via the software provided with each system.

Because the system uses industry standard Ethernet based protocols, the TSC/E can be remotely configured, operated and serviced over the Internet*. This offers the end user a lowered cost of operation as well as increased service response time.

* Internet interface requires additional software and hardware as well as user supplied isp account

JOB NUMBER:
 JOB NAME:
 CUSTOMER:
 P.O. #

APPROVAL STAMP